





**Storage Vials from 1.0 - 60 ml with closed-top, PTFE lined screw cap**

Our Storage Vial line comprises 6 vial diameters and over 30 different dimensions within the volumes of 1.0 - 60 ml. The vials come assembled with closed-top PTFE lined screw cap and are supplied in a high quality card board box with a grit divider holding 100 vials. The box is also ideally suited for storing or for transportation of the vials.



				
	<b>Vial ø 12 mm</b> <b>Screw thread 9-425</b>	<b>Vial ø 14 mm</b> <b>Screw thread 13-425</b>	<b>Vial ø 17 mm</b> <b>Screw thread 15-425</b>	<b>Vial ø 19 mm</b> <b>Screw thread 15-425</b>
<b>Kit</b>	height: 24 mm height: 32 mm, V $\mu$ -Vial height: 32 mm assorted  G195X-12Kit02-H G195X-12Kit02-D	height: 26 mm height: 30 mm height: 45 mm height: 50 mm assorted  G075X-14Kit05-H G075X-14Kit05-D	height: 27 mm height: 35 mm height: 42 mm height: 60 mm height: 72 mm assorted  G075X-17Kit10-H G075X-17Kit10-D	height: 37 mm height: 50 mm height: 65 mm height: 87 mm assorted  G075X-19Kit15-H G075X-19Kit15-D
<b>1.0 ml</b>	height: 24 mm G195*-12/024-H G195*-12/024-D	height: 19 mm G075*-14/019-H G075*-14/019-D		
<b>1.2 ml</b>	height: 32 mm G195*-12/032-H/V15 $\mu$ G195*-12/032-D/V15 $\mu$			
<b>1.5 ml</b>	height: 32 mm G195*-12/032-H G195*-12/032-D	height: 22 mm G075*-14/022-H G075*-14/022-D		
<b>2 ml</b>		height: 26 mm G075*-14/026-H G075*-14/026-D		
<b>2.5 ml</b>		height: 30 mm G075*-14/030-H G075*-14/030-D	height: 27 mm G075*-17/027-H G075*-17/027-D	
<b>3.75 ml</b>		height: 45 mm G075*-14/045-H G075*-14/045-D	height: 35 mm G075*-17/035-H G075*-17/035-D	
<b>5 ml</b>		height: 50 mm G075*-14/050-H G075*-14/050-D	height: 42 mm G075*-17/042-H G075*-17/042-D	height: 37 mm G075*-19/037-H G075*-19/037-D

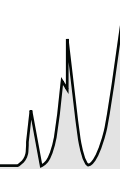
replace «\*» with the **cap colour** of your choice:





					
B = blue	G = green	R = red	S = black	W = white	Y = yellow

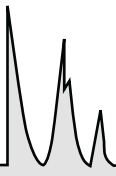
**Glass:**

<b>H</b>	clear glass
<b>D</b>	amber glass

# Storage Vials



				
	<b>Vial ø 17 mm</b> <b>Screw thread 15-425</b>	<b>Vial ø 19 mm</b> <b>Screw thread 15-425</b>	<b>Vial ø 23 mm</b> <b>Screw thread 20-400</b>	<b>Vial ø 27 mm</b> <b>Screw thread 24-400</b>
<b>Kit</b>	height: 27 mm height: 35 mm height: 42 mm height: 60 mm height: 72 mm assorted  G075X-17Kit10-H G075X-17Kit10-D	height: 37 mm height: 50 mm height: 65 mm height: 87 mm assorted  G075X-19Kit15-H G075X-19Kit15-D	height: 37 mm height: 45 mm height: 60 mm height: 75 mm height: 85 mm assorted  G075X-23Kit25-H G075X-23Kit25-D	height: 37 mm, height: 47 mm height: 57 mm, height: 68 mm assorted  G075X-27Kit25-H G075X-27Kit25-D  height: 78 mm, height: 95 mm height: 118 mm, height: 140 mm assorted  G075X-27Kit60-H G075X-27Kit60-D
<b>7.5 ml</b>	height: 60 mm G075*-17/060-H G075*-17/060-D	height: 50 mm G075*-19/050-H G075*-19/050-D	height: 37 mm G075*-23/037-H G075*-23/037-D	
<b>10 ml</b>	height: 72 mm G075*-17/072-H G075*-17/072-D	height: 65 mm G075*-19/065-H G075*-19/065-D	height: 45 mm G075*-23/045-H G075*-23/045-D	height: 37 mm G075*-27/037-H G075*-27/037-D
<b>15 ml</b>		height: 87 mm G075*-19/087-H G075*-19/087-D	height: 60 mm G075*-23/060-H G075*-23/060-D	height: 47 mm G075*-27/047-H G075*-27/047-D
<b>20 ml</b>			height: 75 mm G075*-23/075-H G075*-23/075-D	height: 57 mm G075*-27/057-H G075*-27/057-D
<b>25 ml</b>			height: 85 mm G075*-23/085-H G075*-23/085-D	height: 68 mm G075*-27/068-H G075*-27/068-D
<b>30 ml</b>				height: 78 mm G075*-27/078-H G075*-27/078-D
<b>40 ml</b>				height: 95 mm G075*-27/095-H G075*-27/095-D
<b>50 ml</b>				height: 118 mm G075*-27/118-H G075*-27/118-D
<b>60 ml</b>				height: 140 mm G075*-27/140-H G075*-27/140-D  G055*-27/140-H <i>Vial with round base</i>



## Storage Vial with closed-top, PTFE lined screw cap

Storage Vials are supplied assembled with their closed-top, PTFE lined screw cap and are packed in high quality card board boxes with a grit divider holding 100 vials.



## Storage Vial with glass-fibre enforced polyamide screw cap

1.0 ml - 2 ml Storage Vials:  $\varnothing$  12 mm, screw thread 9-425 («HP» type)



1.0 ml 12 x 24 mm	1.2 ml V $\mu$ 12 x 32 mm <i>with small residual volume</i>	1.5 ml 12 x 32 mm
G195*-12/024-H G195*-12/024-D	G195*-12/032-H/V15 $\mu$ G195*-12/032-D/V15 $\mu$	G195*-12/032-H G195*-12/032-D

## Storage Vial with polypropylene screw cap

1.0 ml - 5 ml Storage Vials:  $\varnothing$  14 mm, screw thread 13-425



1.0 ml 14 x 19 mm	1.5 ml 14 x 22 mm	2 ml 14 x 26 mm	2.5 ml 14 x 30 mm	3.75 ml 14 x 45 mm	5 ml 14 x 50 mm
G075*-14/019-H G075*-14/019-D	G075*-14/022-H G075*-14/022-D	G075*-14/026-H G075*-14/026-D	G075*-14/030-H G075*-14/030-D	G075*-14/045-H G075*-14/045-D	G075*-14/050-H G075*-14/050-D

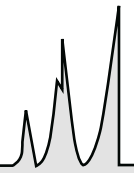
replace «\*» with the **cap colour** of your choice:

B = blue	G = green	R = red	S = black	W = white	Y = yellow

**Glass:**

<b>H</b>	clear glass
<b>D</b>	amber glass

# Storage Vials



## 2.5 ml - 10 ml Storage Vials: ø 17 mm, screw thread 15-425

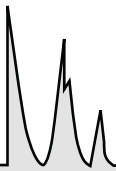


2.5 ml 17 x 27 mm	3.75 ml 17 x 35 mm	5 ml 17 x 42 mm	7.5 ml 17 x 60 mm	10 ml 17 x 72 mm
G075*-17/027-H G075*-17/027-D	G075*-17/035-H G075*-17/035-D	G075*-17/042-H G075*-17/042-D	G075*-17/060-H G075*-17/060-D	G075*-17/072-H G075*-17/072-D

## 5 ml - 15 ml Storage Vials: ø 19 mm, screw thread 15-425



5 ml 19 x 37 mm	7.5 ml 19 x 50 mm	10 ml 19 x 65 mm	15 ml 19 x 87 mm
G075*-19/037-H G075*-19/037-D	G075*-19/050-H G075*-19/050-D	G075*-19/065-H G075*-19/065-D	G075*-19/087-H G075*-19/087-D



## Storage Vials

### Storage Vial with closed-top, PTFE lined screw cap

Storage Vials are supplied assembled with their closed-top, PTFE lined screw cap and are packed in high quality card board boxes with a grit divider holding 100 vials.



### 7.5 ml - 25 ml Storage Vial with closed-top, PTFE lined screw cap: $\varnothing$ 23 mm, screw thread 20-400



7.5 ml 23 x 37 mm	10 ml 23 x 45 mm	15 ml 23 x 60 mm	20 ml 23 x 75 mm	25 ml 23 x 85 mm
G075*-23/037-H G075*-23/037-D	G075*-23/045-H G075*-23/045-D	G075*-23/060-H G075*-23/060-D	G075*-23/075-H G075*-23/075-D	G075*-23/085-H G075*-23/085-D

replace «\*» with the **cap colour** of your choice:

					
B = blue	G = green	R = red	S = black	W = white	Y = yellow

**Glass:**

<b>H</b>	clear glass
<b>D</b>	amber glass

[www.chemoline.ch](http://www.chemoline.ch)

#### Hoody «overreaction»

(Product number: size L : 56-5402)

80% cotton (325 g/m<sup>2</sup>)  
and 20% polyester  
various colours available



[www.chemoline.ch](http://www.chemoline.ch)

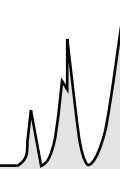
#### pharmacist bottles with groundglass stopper

(Product number: 50 ml amber glass: 50-4051)

clear or amber glass  
various volumes available



# Storage Vials



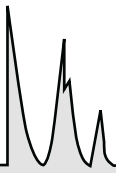
**10 ml - 60 ml Storage Vial with closed-top screw cap: ø 27 mm, screw thread 24-400**



<b>10 ml</b> <b>27x 37 mm</b>	<b>15 ml</b> <b>27 x 47 mm</b>	<b>20 ml</b> <b>27 x 57 mm</b>	<b>25 ml</b> <b>27x 68 mm</b>
G075*-27/037-H G075*-27/037-D	G075*-27/047-H G075*-27/047-D	G075*-27/057-H G075*-27/057-D	G075*-27/068-H G075*-27/068-D



<b>30 ml</b> <b>27 x 78 mm</b>	<b>40 ml</b> <b>27 x 95 mm</b>	<b>50 ml</b> <b>27 x 118 mm</b>	<b>60 ml</b> <b>27 x 140 mm</b>	<b>60 ml</b> <b>27 x 140 mm</b>
G075*-27/078-H G075*-27/078-D	G075*-27/095-H G075*-27/095-D	G075*-27/118-H G075*-27/118-D	G075*-27/140-H G075*-27/140-D	vial with round base G055*-27/140-H



## 1.0 ml - 5 ml Storage Vial with "hard" Melamine Resin screw cap (may be used up to 120°C)

Vials ø 14 mm, screw thread 13-425







Storage Vial with «hard» Melamine Resin PTFE lined screw cap which may be used up to 120 °C. Vials and caps are supplied assembled and are packed in high quality card board boxes with a grit divider holding 100 vials.



1.0 ml 14 x 19 mm	1.5 ml 14 x 22 mm	2 ml 14 x 26 mm	2.5 ml 14 x 30 mm	3.75 ml 14 x 45 mm	5 ml 14 x 50 mm
G085*-14/019-H G085*-14/019-D	G085*-14/022-H G085*-14/022-D	G085*-14/026-H G085*-14/026-D	G085*-14/030-H G085*-14/030-D	G085*-14/045-H G085*-14/045-D	G085*-14/050-H G085*-14/050-D

## Closed-top, PTFE lined screw caps

Screw threads: 9-425, 13-425, 15-425, 20-400 & 24-400

	<p><b>Screw thread 9-425</b></p> <p>PTFE-lined Polyamide Screw Cap (Type "HP"), ribbed cap collar, for Storage Vials with volumes 1.0 ml - 2 ml; Vial ø 12 mm</p> <p><b>G195-C*/09</b></p>		<p><b>Screw thread 15-425</b></p> <p>PTFE-lined Polypropylene Screw Cap for Storage Vials with volumes 2.5 ml - 15 ml; Vial ø 17 mm &amp; 19 mm; may be used up to 80°C</p> <p><b>G075-C*/15</b></p>
	<p><b>Screw thread 13-425</b></p> <p>PTFE-lined Melamine Resin Screw Cap for Storage Vials with volumes 1.0 ml - 5 ml; Vial ø 14 mm; may be used up to 120°C</p> <p><b>G085-C*/13</b></p>		<p><b>Screw thread 20-400</b></p> <p>PTFE-lined Polypropylene Screw Cap for Storage Vials with volumes 7.5 ml - 25 ml; Vial ø 23 mm; may be used up to 80°C</p> <p><b>G075-C*/20</b></p>
	<p><b>Screw thread 13-425</b></p> <p>PTFE-lined Polypropylene Screw Cap for Storage Vials with volumes 1.0 ml - 5 ml; Vial ø 14 mm; may be used up to 80°C</p> <p><b>G075-C*/13</b></p>		<p><b>Screw thread 24-400</b></p> <p>PTFE-lined Polypropylene Screw Cap for Storage Vials with volumes 10 ml - 60 ml; Vial ø 27 mm; may be used up to 80°C</p> <p><b>G075-C*/24</b></p>

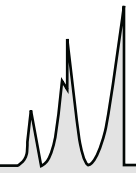
replace «\*» with the **cap colour** of your choice:

					
B = blue	G = green	R = red	S = black	W = white	Y = yellow

**Glass:**

<b>H</b>	clear glass
<b>D</b>	amber glass

# Storage Vials for long-term storage



## 10 & 20 ml Storage Vials for the long-term storage of volatile samples

10 and 20 ml Headspace Vials with closed-top melamine resin screw caps for the long-term storage of volatile samples. The screw caps are available in our six standard colours, either PTFE lined or with butyl rubber/PTFE septum.

### with PTFE lined screw cap



**GH85\*-23/043-H**

10 ml Storage Vials,  
clear glass, rounded base,  
size 23 x 43 mm

assembled with high density, closed-top,  
PTFE lined screw cap



**GH85\*-23/073-H**

20 ml Storage Vials,  
clear glass, rounded base,  
size 23 x 73 mm

assembled with high density, closed-top,  
PTFE lined screw cap

### with butyl rubber/PTFE septum



**GH85\*-23/043-BZFZ31-H**

10 ml Storage Vials,  
clear glass, rounded base,  
size 23 x 43 mm

assembled with high density, closed-top  
screw cap with butyl rubber/PTFE septum



**GH85\*-23/073-BZFZ31-H**

20 ml Storage Vials,  
clear glass, rounded base,  
size 23 x 73 mm

assembled with high density, closed-top  
screw cap with butyl rubber/PTFE septum

*also available graduated,  
see below & page 33*

## Graduated 20 ml Storage Vial for the long-term storage of volatile samples

20 ml Headspace Vials with closed-top melamine resin screw cap for the long-term storage of volatile samples. Available either PTFE lined or assembled with butyl rubber/PTFE septum.



**GH85\*-23/073-H/G**

20 ml Storage Vial,  
graduated at 5, 10 & 15 ml,  
clear glass, rounded base,  
size 23 x 73 mm

assembled with high density, closed-top,  
PTFE lined screw cap



**GH85\*-23/073-BZFZ31-H/G**

20 ml Storage Vial,  
graduated at 5, 10 & 15 ml,  
clear glass, rounded base,  
size 23 x 73 mm

assembled with high density, closed-top  
screw cap with butyl rubber/PTFE  
septum

replace «\*» with the **cap colour** of your choice:

					
B = blue	G = green	R = red	S = black	W = white	Y = yellow

### Glass:

<b>H</b>	clear glass
<b>D</b>	amber glass