

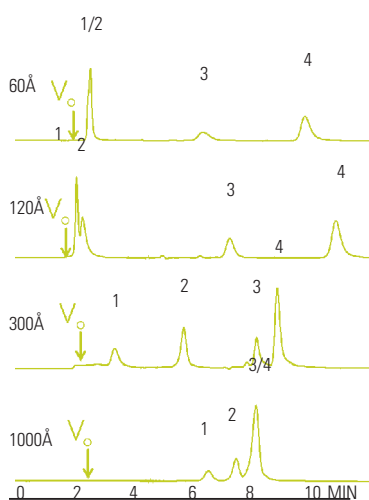
## BioBasic SEC Columns

Superior separation of water soluble compounds

- Covers separation of analytes over a wide molecular weight range
- Long column life and high column efficiencies
- Simple mechanism of interaction based on molecular size and shape
- Ideal for sample clean-up
- Straightforward method development, simple mobile phases

### BioBasic SEC Ordering Guide

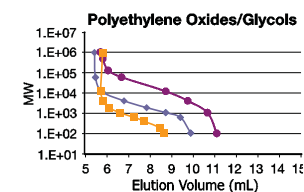
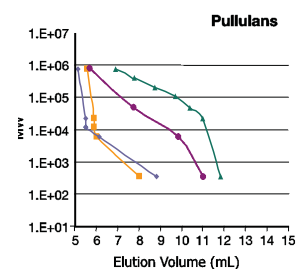
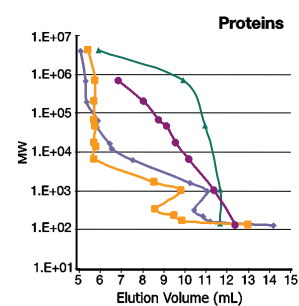
Pore Size (Å)	Description	ID (mm)	Length (mm)	Cat. No.
<b>BioBasic SEC 60</b>				
60	Guard	7.8	30	<b>73305-037821</b>
	HPLC Column	7.8	150	<b>73305-157846</b>
	HPLC Column	7.8	300	<b>73305-307846</b>
<b>BioBasic SEC 120</b>				
120	Guard	7.8	30	<b>73405-037821</b>
	HPLC Column	7.8	150	<b>73405-157846</b>
	HPLC Column	7.8	300	<b>73405-307846</b>
<b>BioBasic SEC 300</b>				
300	Guard	7.8	30	<b>73505-037821</b>
	HPLC Column	7.8	150	<b>73505-157846</b>
	HPLC Column	7.8	300	<b>73505-307846</b>
<b>BioBasic SEC 1000</b>				
1000	Guard	7.8	30	<b>73605-037821</b>
	HPLC Column	7.8	150	<b>73605-157846</b>
	HPLC Column	7.8	300	<b>73605-307846</b>



#### Columns: BioBasic SEC, 5µm, 300 x 7.8mm

Eluent: 0.1M KH<sub>2</sub>PO<sub>4</sub>, pH 7  
 Flow: 1.0mL/min  
 Detector: UV at 254nm  
 Injection: 20µL  
 Sample: 1. Thyroglobulin (MW669,00)  
 2. Ovalbumin (MW 45,000)  
 3. Angiotensin II (MW 1,046)  
 4. PABA (V<sub>m</sub>) (MW 137)

Effect of pore size on SEC resolution



**BioBasic SEC,**  
 — 60Å — 300Å  
 — 120Å — 1000Å

Molecular weight calibration curves