

## MTS-32™

### Multi-tube sequential sampler

The MTS-32 is a compact, portable device that allows unattended pumped sampling of air onto a series of sorbent tubes.

#### Constant-flow sampling

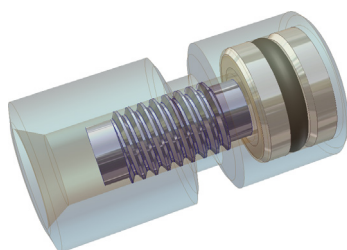
The MTS-32 draws air through a series of up to 32 industry-standard (3½" long × ¼" o.d.) sorbent tubes. To ensure that the same flow rate and volume of air is sampled onto each tube in the sequence, a constant-flow pump should be used. Markes recommends the ACTI-VOC™ pump for use with the MTS-32.

Sampling times can be varied from 1 minute to 99 hours, and flows can be adjusted from 5–100 mL/min. The values set apply to all tubes in the sequence.

#### Sample security

To avoid both diffusive ingress of atmospheric contaminants and loss of retained volatiles, the sampling tubes used on the MTS-32 incorporate Markes' patented diffusion-locking technology. This is achieved using either:

- **DiffLok™ caps** (right), which fit onto the sampling end of a standard sorbent tube.
- **SafeLok™ tubes**, which are permanently fitted with a diffusion-locking insert.



#### Product highlights

- Sequential sampling on up to 32 industry-standard tubes.
- Constant-flow pump ensures consistent sample volumes.
- Diffusion-locking technology ensures sample security.
- Ideal for field monitoring applications.
- Can be powered by a battery or by mains electricity.

## Wide analyte and concentration range

The MTS-32 is suitable for monitoring vapour concentrations from low ppt to high ppm, over a wide volatility range.



Please consult our tube brochure or catalogue for more information on our wide range of application-specific sorbent tubes.

## Key applications



Monitoring diurnal pollutant fluctuations in ambient air



Continuous monitoring of industrial emissions

## Versatile power options

Three options are available to supply the pump and sampler with power.

- A Internal 12 V battery:** For indoor and outdoor sampling, we offer a rechargeable battery, which allows operation for over 40 hours when fully charged.
- B External 12 V battery:** For outdoor sampling, we offer an adaptor to connect the MTS-32 to a 12 V lead-acid battery (which the user should supply).
- C Mains electricity:** For indoor sampling, we offer an adaptor to power the MTS-32 from a mains outlet.

## Portable, reliable air monitoring

The MTS-32 has a compact, portable, showerproof case that is constructed of low-outgassing components to minimise the risk of tube contamination. A protective gauze across the fan inlet prevents particulates or wildlife from entering the MTS-32 and disrupting the air flow.

A fan efficiently exchanges the air within the MTS-32 case, which ensures representative sampling from the immediate environment, and allows transient pollutants to be quantitatively measured.



**Order your MTS-32 today**

### Part numbers:

- ▶ Multiple-tube sampler MTS-32
- ▶ ACTI-VOC low-flow pump kit C-LFP-01
- ▶ Power options – please choose one of the following:
  - A** Internal battery & charger MTS-5009 & MTS-5010
  - B** Adaptor for external battery MTS-5013
  - C** Mains electricity adaptor MTS-5011

Don't forget to add DiffLok caps and a flowmeter to your order – please see our catalogue for details.

**To order, please contact your regional distributor or one of our offices (details below).**



Analys & Mätteknik

**Markes International** 031 336 90 00 • [www.scantecnordic.se](http://www.scantecnordic.se)

**UK:** Gwaun Elai Medi-Science Campus, Llantrisant, RCT, CF72 8XL

**T:** +44 (0)1443 230935

**USA:** 2355 Gold Meadow Way, Gold River, Sacramento, California 95670

**T:** +1 866-483-5684 (toll-free)

**Germany:** Bieberer Straße 1–7, 63065 Offenbach am Main

**T:** +49 (0)69 6681089-10

**P.R. China:** No. 1 Building, No. 7 Guiqing Road, Xuhui District, Shanghai 200233

**T:** +86 21 5465 1216

**E:** [enquiries@markes.com](mailto:enquiries@markes.com) **W:** [www.markes.com](http://www.markes.com)

